

# ROLLER BANNER STANDS 1,200mm

ROLLER BANNER STANDS



Highly versatile  
roller banner

Single and double  
sided options

Rapid, easy assembly

ROLLER BANNER STANDS

# THE MARKET LEADING

WE'VE MADE SOME IMPROVEMENTS TO OUR **MARKET-LEADING** ROLLER BANNER SYSTEM. THE UNIT IS NOW SUPPLIED WITH MAGNETICALLY ATTACHED **BLACK CHROME END TRIMS** ADDING A FURTHER DASH OF STYLE TO THIS EVER-POPULAR BANNER STAND. **SIDEWINDER** IS NOW SUPPLIED **PRE-TENSIONED** AND MEANS THE SYSTEM CAN BE **SET UP IN SECONDS**. THERE IS NOW A GROOVE AT THE FRONT OF THE CASING THAT ALLOWS THE GRAPHIC TO BE REMOVED MORE EASILY. **THE SIDEWINDER** CAN STILL BE USED EITHER **SINGLE** OR **DOUBLE SIDED** AND HAS **TOOL-FREE** SET-UP, OFFERING **RAPID ASSEMBLY**. AN IMPRESSIVE VISIBLE GRAPHIC HEIGHT OF 2100mm AND A CHOICE OF **5 BASE WIDTHS**,

## FEATURES

- Visible graphic panel 2100mm high
- Choice of 5 width options - 600, 800, 1000, 1200 and 1500mm
- Single or double sided options
- Integral bungeed poles
- Sleek satin anodised casing and pole set
- Supplied with magnetically attached black chrome end trims
- Groove at front allows graphic to be removed easily
- Simply roll out the graphic and set the system up in seconds
- Units are supplied pre-tensioned
- Comes with a padded carry bag

## ACCESSORIES

- Huge range of spotlighting options
- Optional aluminium flight case available



International Patent No. 2391685

HIGHLY PORTABLE | SINGLE OR D

# SYSTEM



1. Helios 3  
50w hi spotlight
2. Helios 4  
50w hi spotlight
3. Helios 5  
50w hi spotlight
4. Helios 7  
50w low voltage spotlight
5. Helios 8  
50w low voltage spotlight
6. Padded carry bag



Bases are available in the following widths :

- 600mm
- 800mm
- 1000mm
- 1200mm
- 1500mm

## SPECIFICATIONS

### GRAPHIC PANEL SIZES

**Finished graphic panel size**  
2300 x 1200 / 1000 / 800 / 600mm  
(Includes 200mm bleed)

### Visual graphic area

2100 x 1200 / 1000 / 800 / 600mm

**Maximum finished graphic panel thickness**  
250 micron

### SYSTEM SIZES

#### Boxed size

1200 = 1290 (L) x 210 (W) x 100 (D)mm  
1000 = 1090 (L) x 210 (W) x 100 (D)mm  
800 = 890 (L) x 210 (W) x 100 (D)mm  
600 = 760 (L) x 210 (W) x 100 (D)mm

#### Assembled size

1200 = 1220 (W) x 190 (D) x 2120 (H)mm  
1000 = 1020 (W) x 190 (D) x 2120 (H)mm  
800 = 820 (W) x 190 (D) x 2120 (H)mm  
600 = 620 (W) x 190 (D) x 2120 (H)mm

### BOXED WEIGHTS

#### Single sided

1200mm = 6.20kg    1000mm = 5.72kg  
800mm = 4.44kg    600mm = 3.63kg

#### Double sided

1200mm = 7.73kg    1000mm = 6.58kg  
800mm = 5.62kg    600mm = 4.81kg

International Patent Application  
No. WO 02/057588  
No. PCT/GB02/00129 in USA

Printing.ie

Rock Road > Killarney > Co. Kerry

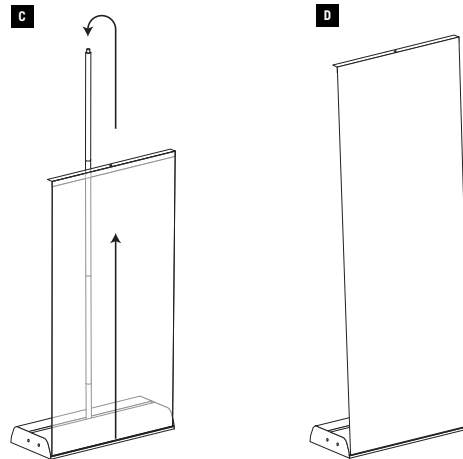
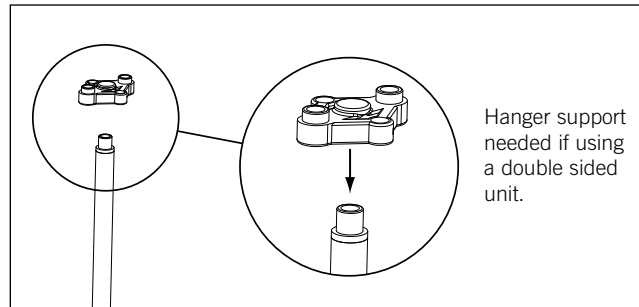
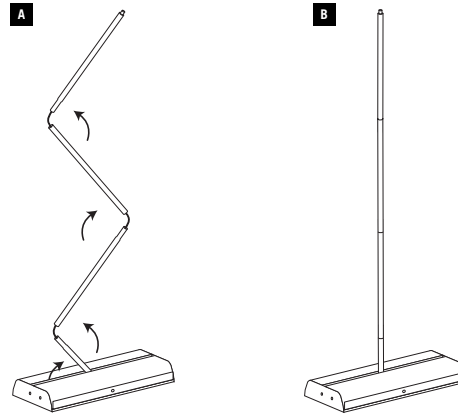
**Telephone 1890 345 678**

International +353 64 34505

sales@printing.ie

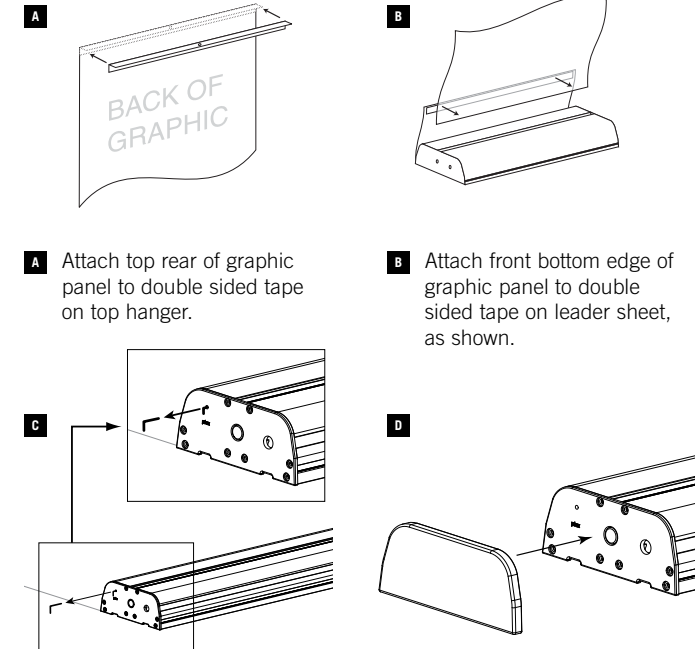
Fax 064 34261

## BANNER STAND ASSEMBLY INSTRUCTIONS



**IMPORTANT NOTICE:**  
When retracting a graphic always slowly guide it into base housing, otherwise graphic damage may occur.

## GRAPHIC ATTACHMENT



**A** Attach top rear of graphic panel to double sided tape on top hanger.

**B** Attach front bottom edge of graphic panel to double sided tape on leader sheet, as shown.

**C** Holding onto graphic, remove locking pin and allow graphic to slowly retract into unit.

**D** Attach end trims.

## ADDING OR REMOVING GRAPHIC TENSION

### ADDING TENSION

Insert a standard flat headed screwdriver into slot located in the end of unit and turn clockwise to add extra graphic tension.

### REMOVING TENSION

To un-tension graphic panel place a flat headed screwdriver into the slot and push to disengage ratchet. Hold in and turn anti-clockwise until tension in spring is released. To remove graphic panel carefully peel it off leader sheet. The graphic hanger can also be removed or a new hanger can be purchased.

